

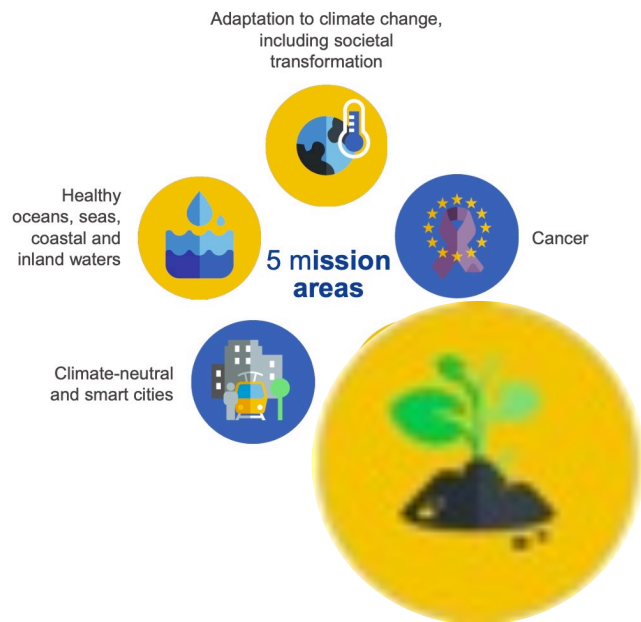


Support Structure for Soil Living Labs

Proposal ID **101112782**

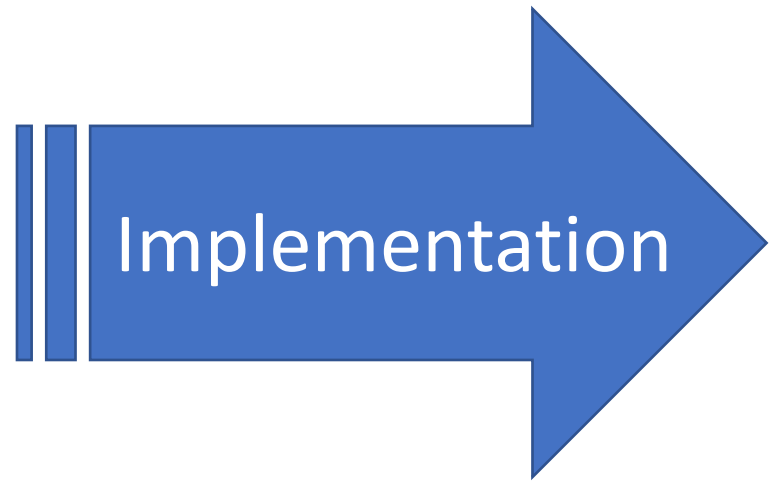
Topic HORIZON-MISS-2022-SOIL-01-08 Type of Action HORIZON-FPA Call
HORIZON-MISS-2022-SOIL-01 Type of Model Grant Agreement HORIZON-FPA-AG
Duration 60 months

Cristina Cruz | ccruz@fc.ul.pt

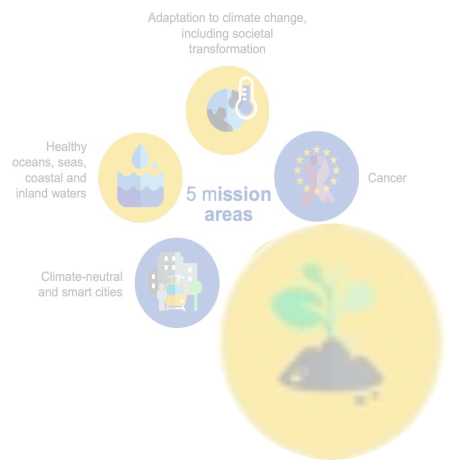


Together, the Green Deal and the Soil Mission set out a green growth strategy for the EU with climate and the environment including land and soils at its centre.

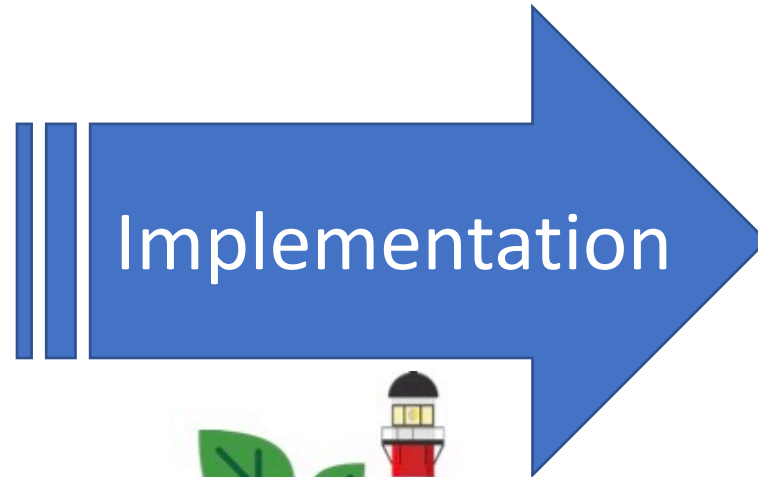
SOIL PARTNERSHIP & NETWORK



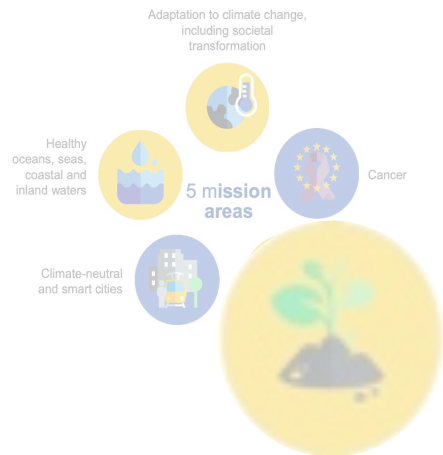
Together, the Green Deal and the Soil Mission set out a green growth strategy for the EU with climate and the environment including land and soils at its centre.



SOILL PARTNERSHIP & NETWORK



Together, the Green Deal and the Soil Mission set out a green growth strategy for the EU with climate and the environment including land and soils at its centre.



100

... by 2030

SOILL PARTNERSHIP & NETWORK

Coordinated by

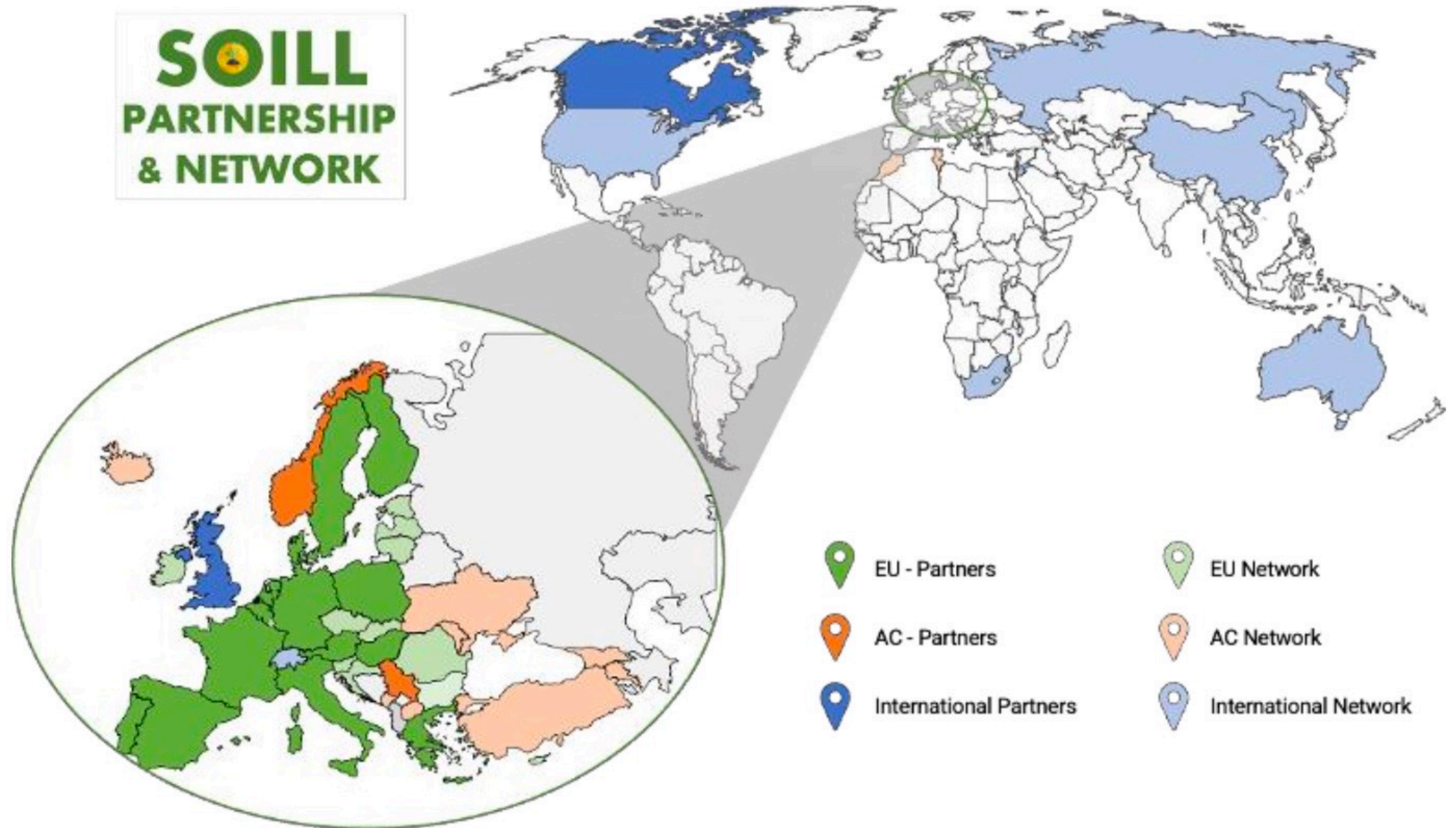


The screenshot shows the SOILL website homepage. At the top left is the SOILL logo. The navigation menu includes: About, Our offer, Network, Knowledge Materials, News & Events, Projects, and Log in. Below the navigation is a newsletter subscription bar with the text 'Subscribe to Our Newsletter' and a 'Sign up with your e-mail' input field. The main content area features three articles:

- Boosting co-creation through capacity building: EU-funded Transformer heads to Bologna**
Between 28-30 March the ENoLL team was in Bologna, Italy to meet with the Transformer project consortium. The ambition of [...]
Social media icons for Facebook, Twitter, and LinkedIn.
- Driving the transition towards healthy soils in Europe: EU funding to launch Support Structure for SOILL Living Labs (SOILL)**
With soils being a precious resource under threat, it is estimated that more than 60% of EU soils are unhealthy. The [...]
Social media icons for Facebook, Twitter, and LinkedIn.
- Call for Papers' evaluators: OpenLivingLab Days 2023**
[For ENoLL Members only] During the third week of September (18-23), we will host our

At the bottom right, there is a banner for 'LIVING LABS FOR AN ERA OF TRANSITIONS' with the subtitle 'How human-centric innovation is changing our lives' and the event details 'Barcelona, 21-23 September 2023'. A 'CALL FOR PAPERS' button is visible on the banner.

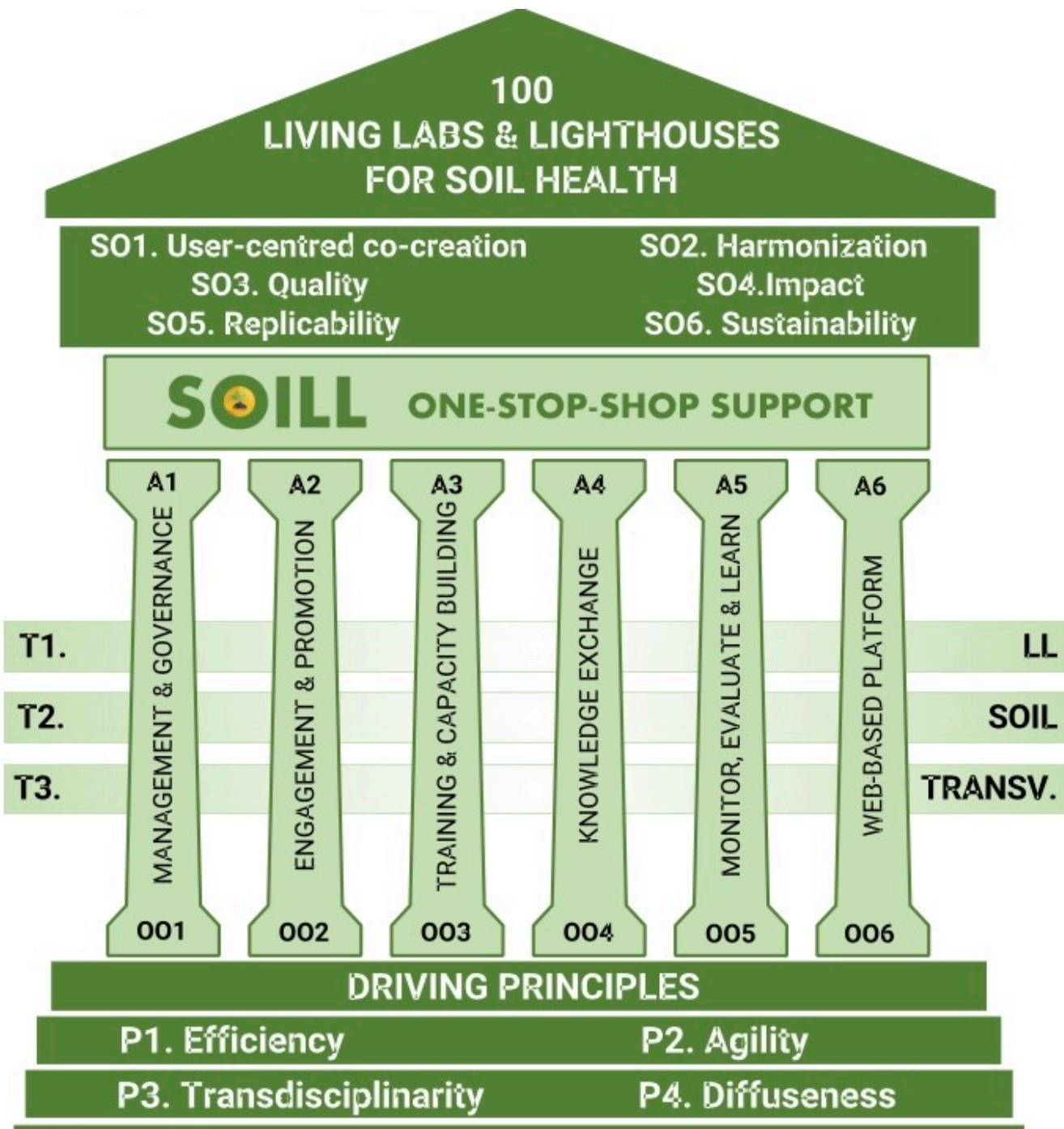
SOILL PARTNERSHIP & NETWORK



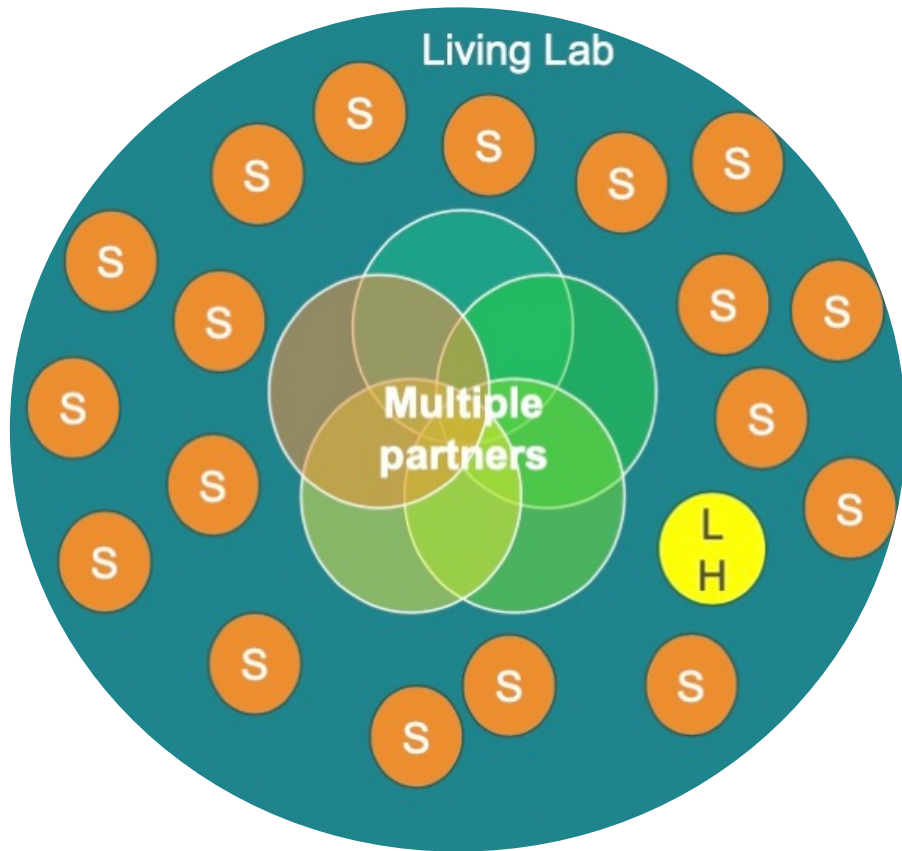
SOILL PARTNERSHIP & NETWORK

Efficiency
Effectiveness
Agility
Trans-disciplinarity
Capillarity
Openness
Fairness
User-centred co-creation
Harmonization
Reliance
Impact
Replicability
Sustainability





SOILL PARTNERSHIP & NETWORK



6 key and common to all living labs

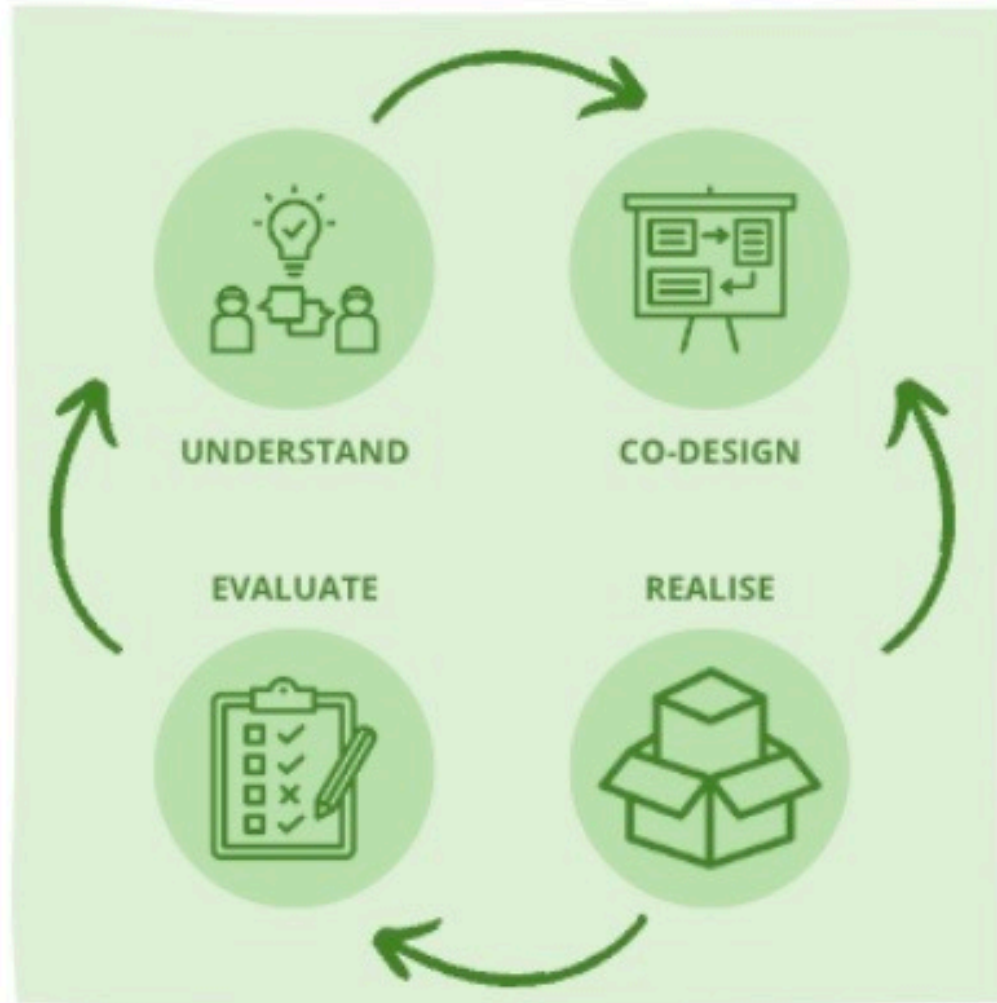
- 1. Active user involvement** (i.e., empowering end users to have an impact on the innovation process)
- 2. Orchestration** (i.e., coordination of activities and actors involved)
- 3. Multi-stakeholder participation** (i.e., the involvement of producers, technology providers, service providers, relevant institutional actors, professional or residential end users)
- 4. Multi-method approach** (i.e., the combination of methods and tools originating from e.g., ethnography, psychology, sociology, strategic management, engineering)
- 5. Real-life setting** (i.e., testing and experimenting “in the wild”)
- 6. Co-creation** (i.e., iterations of design cycles with different sets of stakeholders).

SOILL PARTNERSHIP & NETWORK

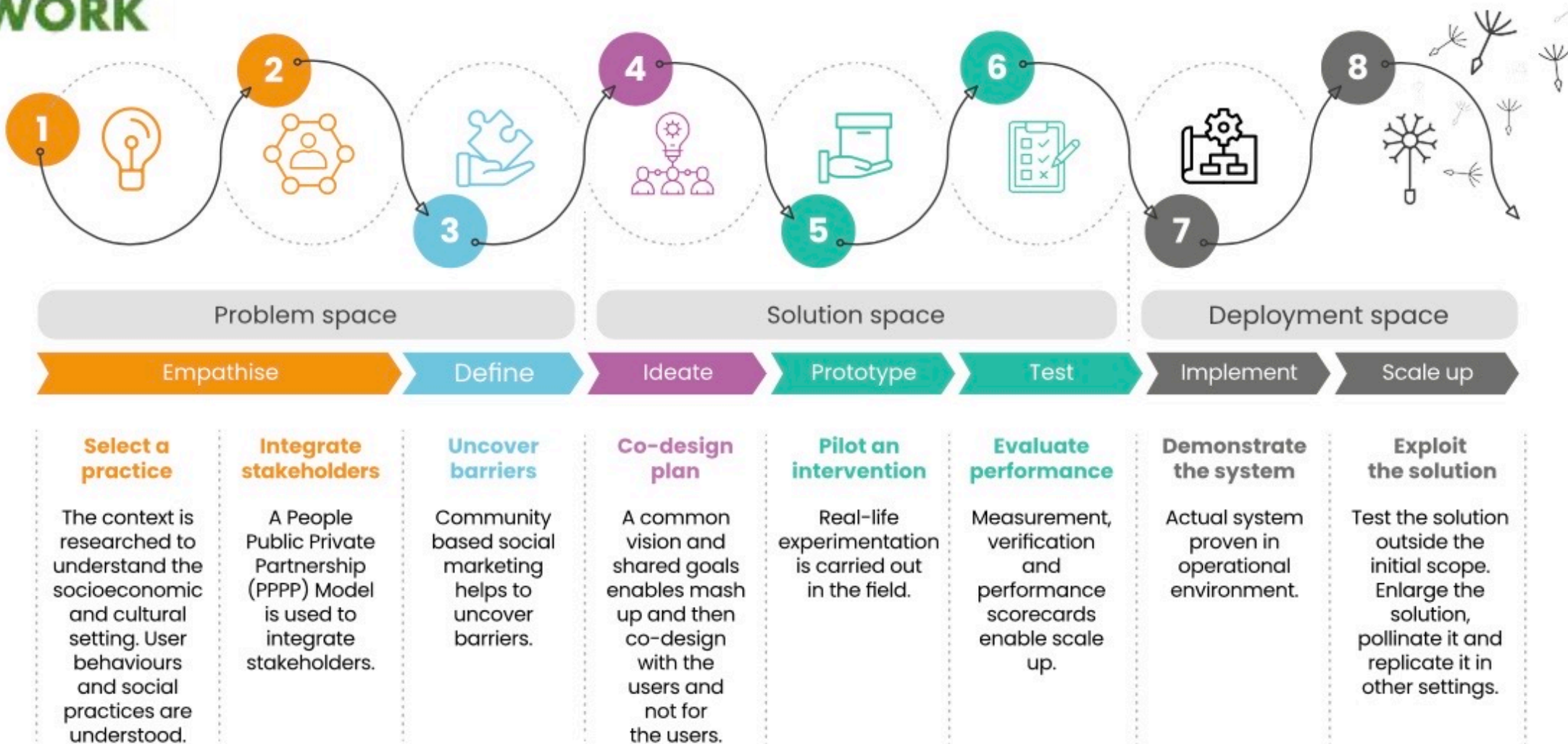
To set up and run an **effective, agile, transdisciplinary, diffuse, open** and **fair** one-stop-shop structure to coordinate, support, enlarge, and promote the network of 100 living labs and lighthouses funded under the Soil Deal Mission and ensure their **co-created user-centred, harmonized, reliable, impactful, replicable**, and **sustainable** lead of the transition towards healthy soils.



Four phases of the co-creation iterative cycle

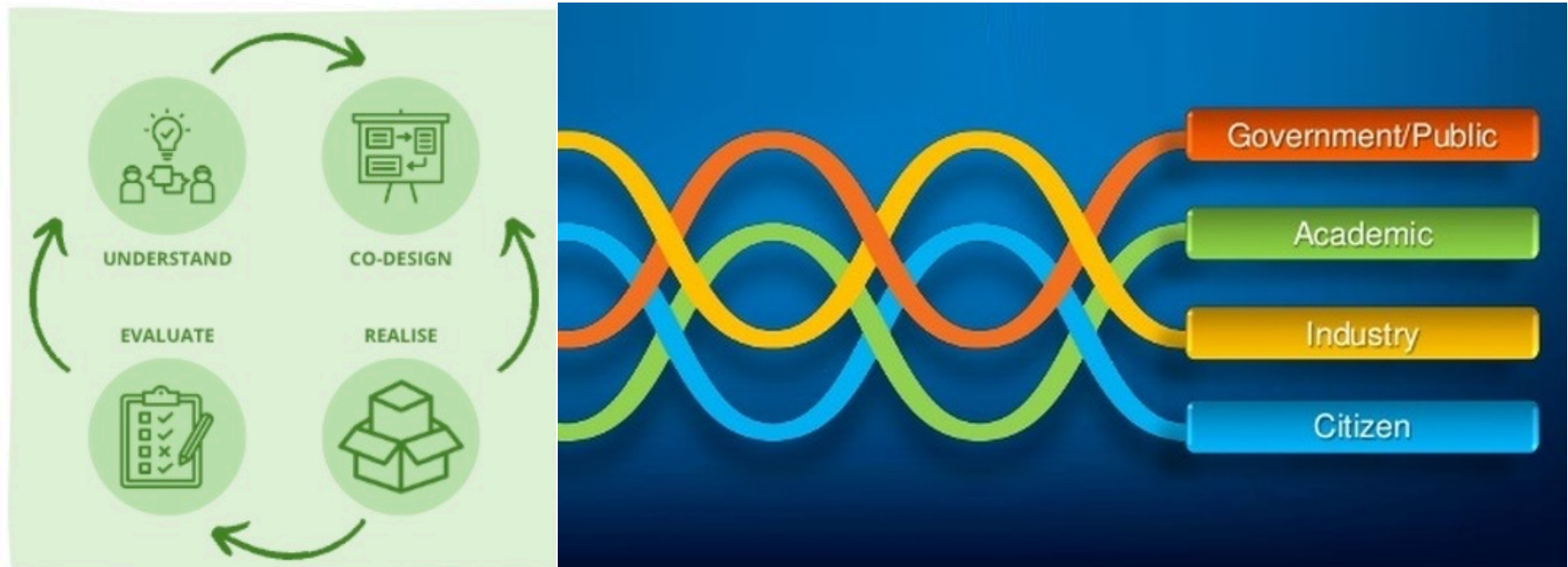


SOILL PARTNERSHIP & NETWORK

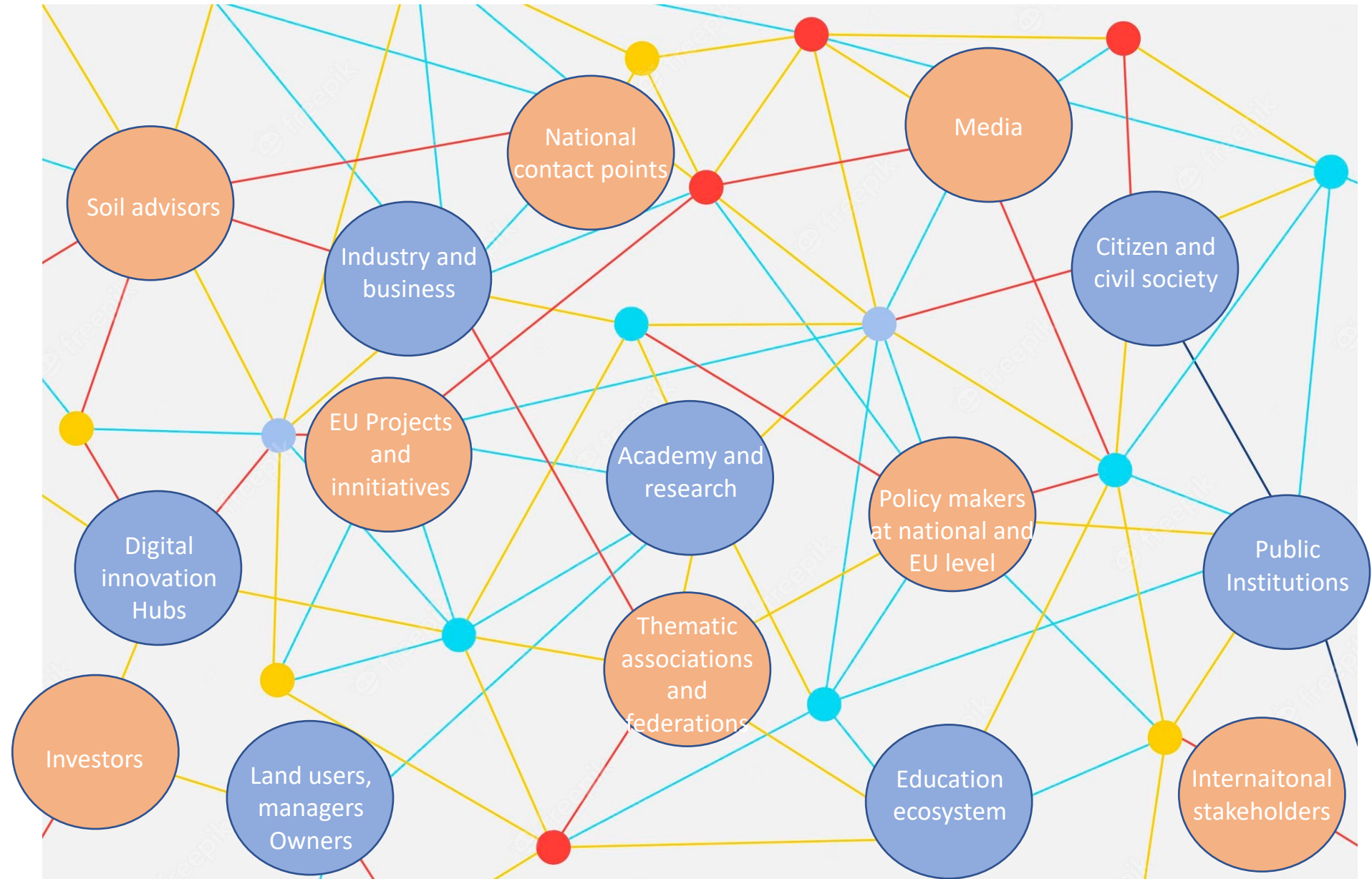


SOILL PARTNERSHIP & NETWORK

Four phases of the co-creation iterative cycle



SOILL PARTNERSHIP & NETWORK





Suitable solutions, and services to be provided include:

- **Mutual Learning sessions with living lab managers** to favour knowledge integration among actors bearing different kinds of knowledge (e.g., scientific, policy-related, technical, experiential) and to support the dissemination processes.

- **Working groups or similar semi-formal bodies** across the three SOILL macro-themes. This strategy allows ownership of the process by engaged stakeholders, provides regular feedback in the construction and co-design of the planned activities, and serves as a platform for the dissemination of outputs and outcomes. Exchange within the working. To increase sense of ownership and to maintain the participation,

- **Matchmaking and P2P digital space** (both within the SHLLs network and beyond) to ease contacts and
- information contacts and facilitate the collaboration beyond the Mission.

- **Cross-visits, demonstrative trials, open-days, landscape walks, fields days, and fields trips** at the various SHLLs locations to intensify and enrich know-how and experiences sharing among peers (and not in a top-down manner from expert to beneficiaries). SOILL will facilitate the organisation of such visits that – when possible – will be aligned to visibility, engagement, and/or training activities in the local context.

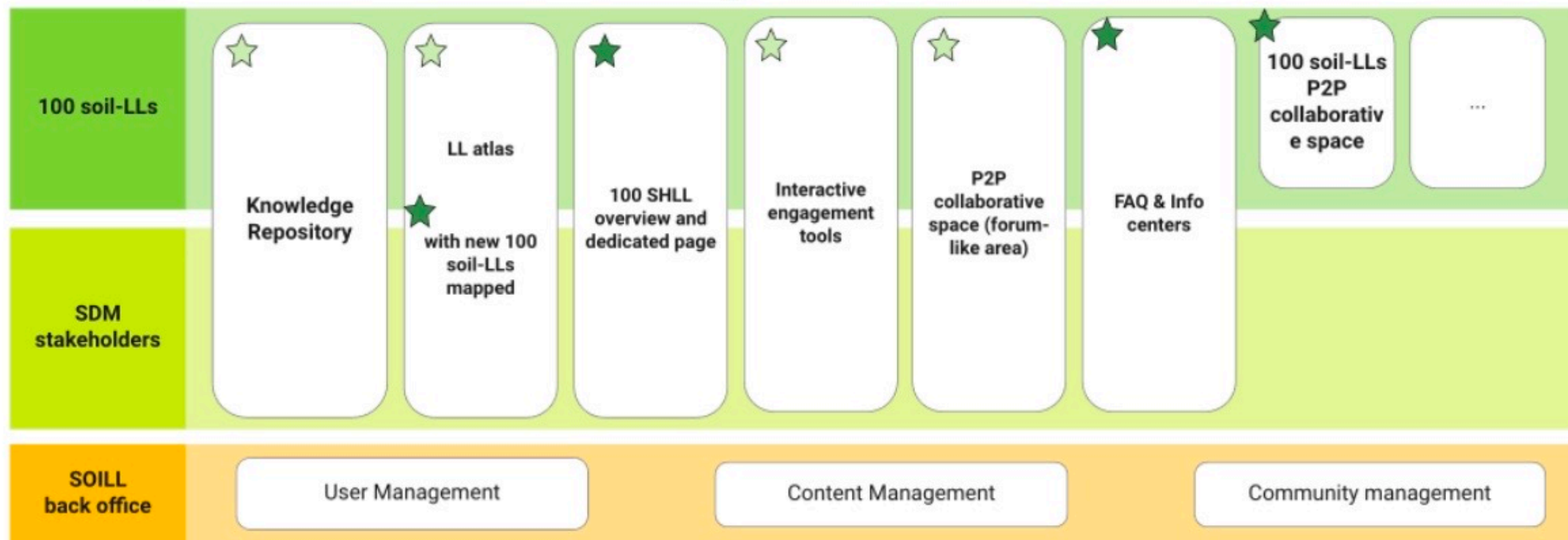
- **Cross-visits, demonstrative trials, open-days, landscape walks, fields days, and fields trips** at the various SHLLs locations to intensify and enrich know-how and experiences sharing among peers (and not in a top-down manner from expert to beneficiaries). SOILL will facilitate the organisation of such visits that – when possible – will be aligned to visibility, engagement, and/or training activities in the local context.

- **A digital knowledge hub** (available through the SOILL platform, A6) to collect tools, services, videos, models, and relevant information to help translate soil science into action.

SOILL PARTNERSHIP & NETWORK

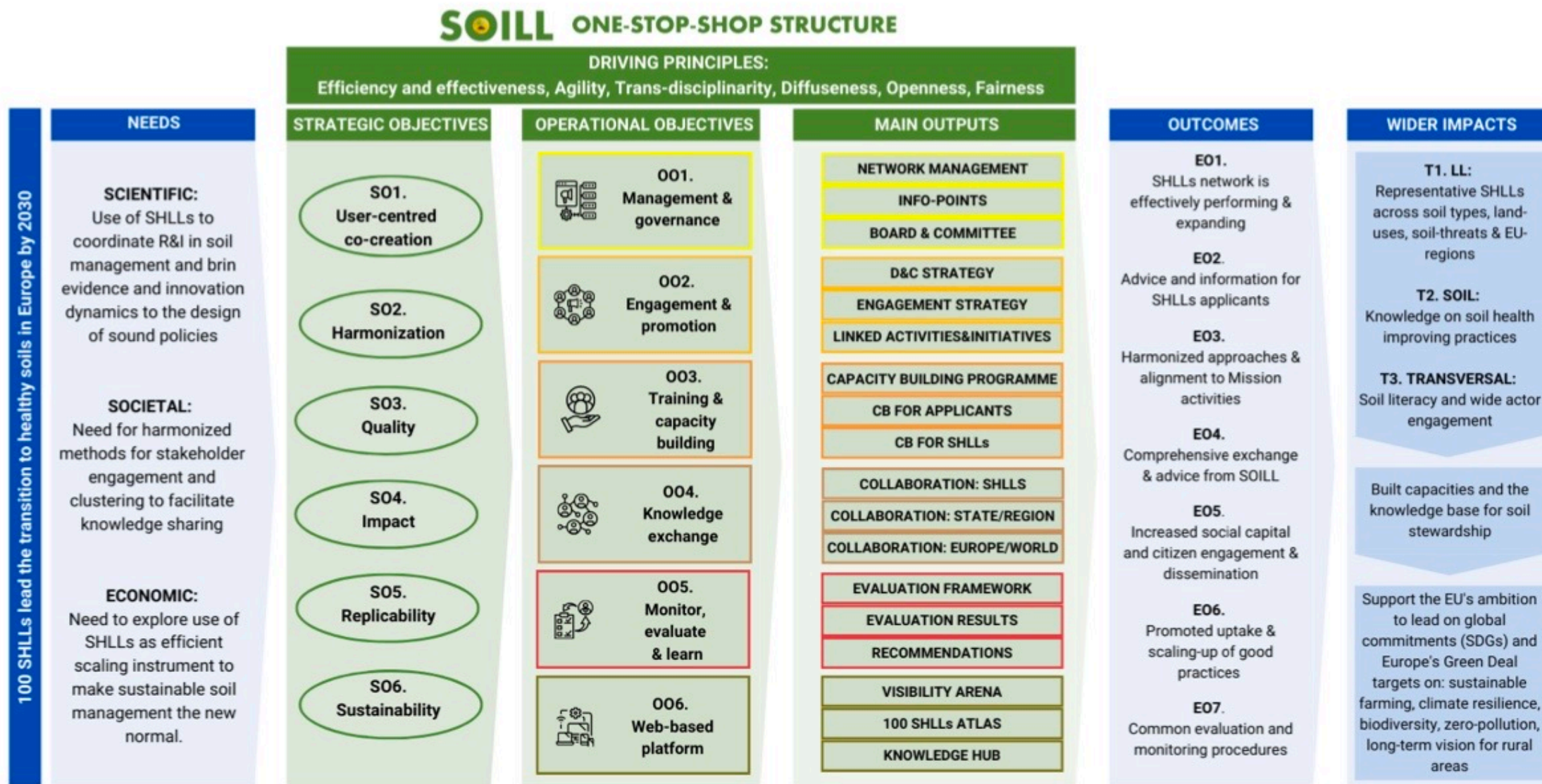
★ New modules to be developed by SOILL

★ Expected existing modules to be expanded and integrated by SOILL



Preliminary modular design of the SOILL Platform building on PREPSOIL Platform.

Suitable solutions, and services to be provided include:



SOILL pathway to impact.



5W+1H approach for SOILL D&C strategy.

SOILL
PARTNERSHIP
& NETWORK

COMING SOON

... In a computer near you.

Cristina Cruz | ccruz@fc.ul.pt



SOILL
PARTNERSHIP
& NETWORK

European
Network of
Living Labs

UNIVERSITÄT GREIFSWALD
Wissen lockt. Seit 1456



EEB
European
Environmental
Bureau



Partner in the



GREIFSWALD
MIRE
CENTRE



democratic
society

INRAE

FiBL
Europe



CIHEAM
BARI



ERRIN
European Regions
Research and
Innovation Network



Norwegian University of
Science and Technology



crea
Consiglio per la ricerca in agricoltura
e l'analisi dell'economia agraria



KRAKOW
TECHNOLOGY
PARK



Co-funded by the
European Union



Deltares



NORWEGIAN INSTITUTE OF
BIOECONOMY RESEARCH



Gallilee Research Institute LTD.



ILVO
Flanders research institute for
agriculture, fisheries and food

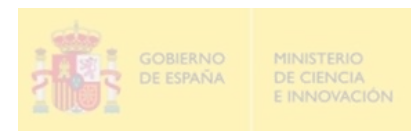


AARHUS UNIVERSITY



Agriculture and
Agri-Food Canada

Agriculture et
Agroalimentaire Canada



CONSEJO SUPERIOR DE INVESTIGACIONES CIENTÍFICAS



ACR+



ÖKÖLOGIAI MEZŐGAZDASÁGI KUTATÓINTÉZET
Research Institute of Organic Agriculture | Forschungsinstitut für biologischen Landbau

